

# POWERFLEX®

## PART NUMBER

# PFF5-4632

## DESCRIPTION

## SHIFT CARRIER REAR BUSH

## INSTALLATION GUIDE

### Contents (parts per pack):

1 x Polyurethane Bush    1 x PTFE/Silicone Grease    1 x Outer Shell

Please read the complete fitting instructions and check package components before fitment. These fitting instructions are to be used as a guide and in conjunction with workshop manual.

It is recommended that:

- all work to be carried out by a licensed technician;
- all safety precautions adhered to;
- wheel alignment to be checked and adjusted as required after any suspension work.
- All fasteners must be tensioned to manufacturer's torque settings.

### Fitting Instructions:

1. Gain access to the shifter bush. This may require the exhaust and prop shaft to be dropped to ease installation, although it is not necessary.
2. The shifter bush is held to the underside of the vehicle by a bracket with two tabs that clip into matching slots on the outer casing of the bush. To remove the bush you will need to unclip it from these tabs by using a small screwdriver or pick in the slots in the bracket to pry the bush downwards as shown in Fig 1.
3. Slide the OE rubber bush off of the shifter fork and clean off any dirt or corrosion.
4. Apply some of the supplied grease to the shifter fork and then fit the bush in the orientation as shown in Fig 2, with the flange of the bush facing the front of the vehicle.
5. Present the bush to the mounting bracket on the vehicle and clip one tab in to start. You will then need to roll the bush and outer shell whilst applying pressure, until the other tab clips in. If the prop shaft is still in place, then you can use this to lever against.
6. Refit any hardware removed.

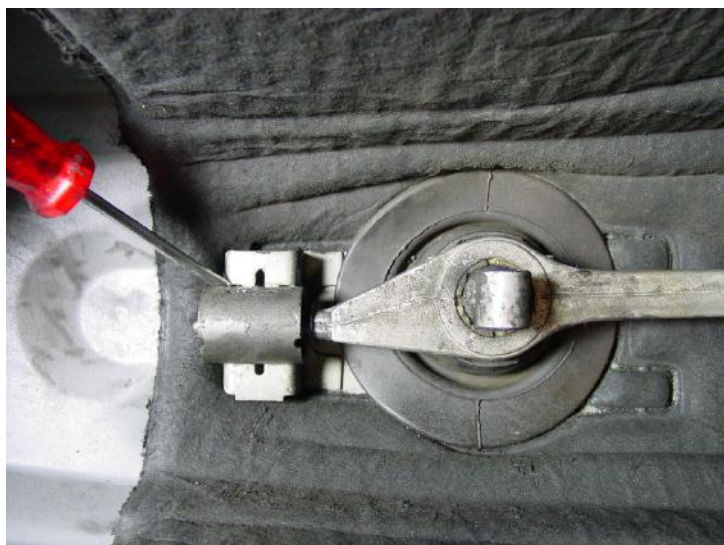


Figure 1 - Un-clipping the rear shift carrier

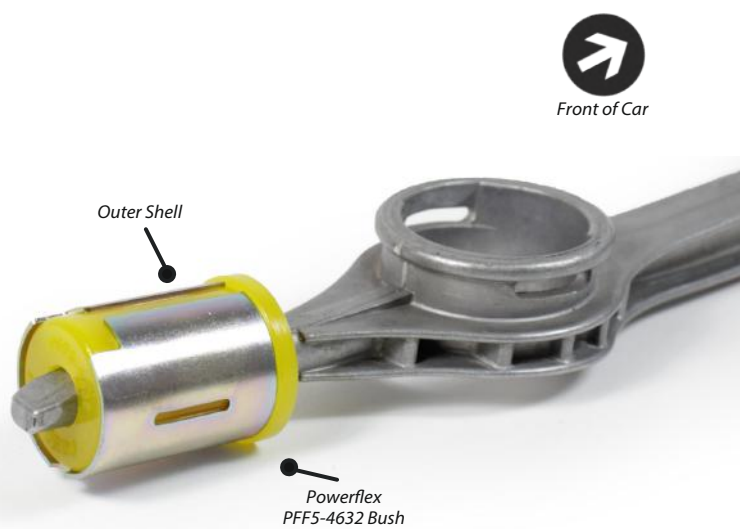


Figure 2 - PFF5-4632 Fitted Image